



Real-Time
Visibility



On-Demand
Reporting



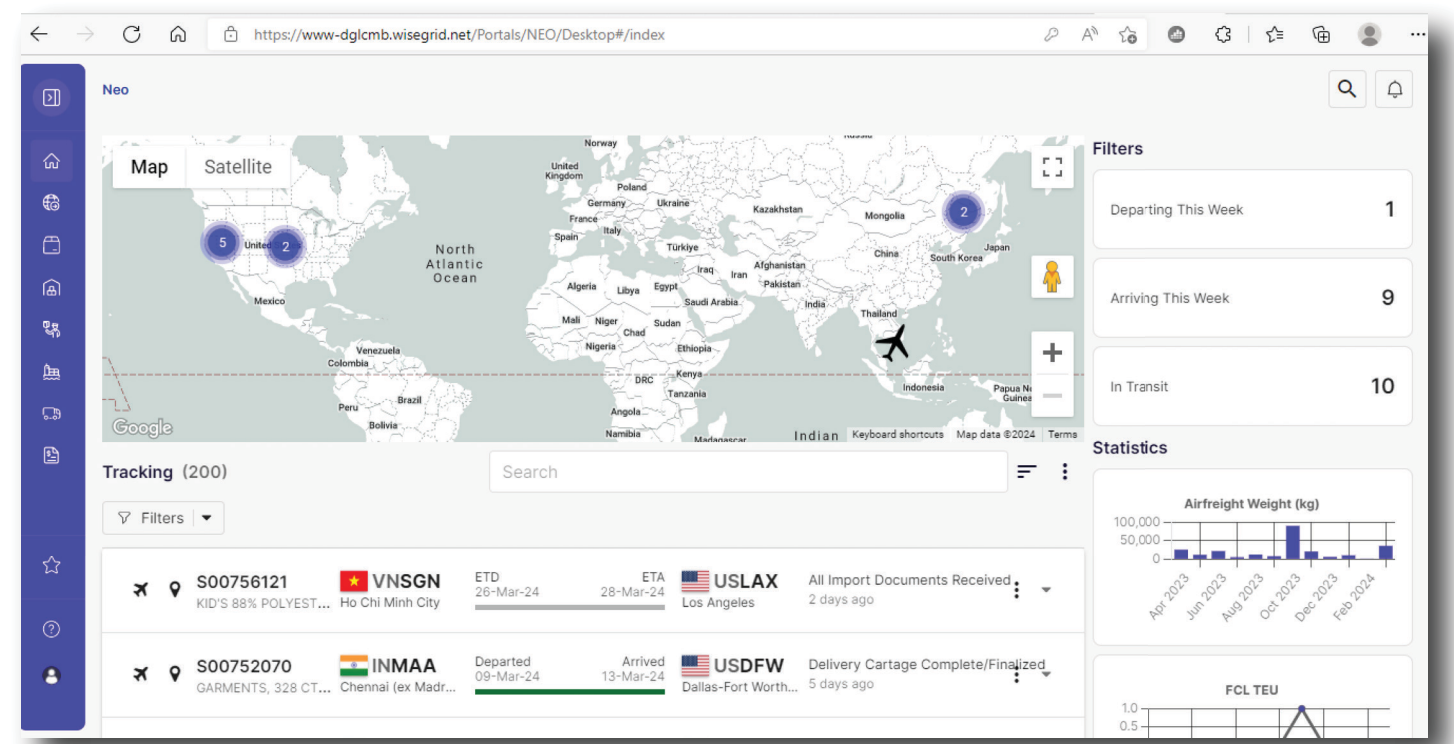
Automatic
Notifications



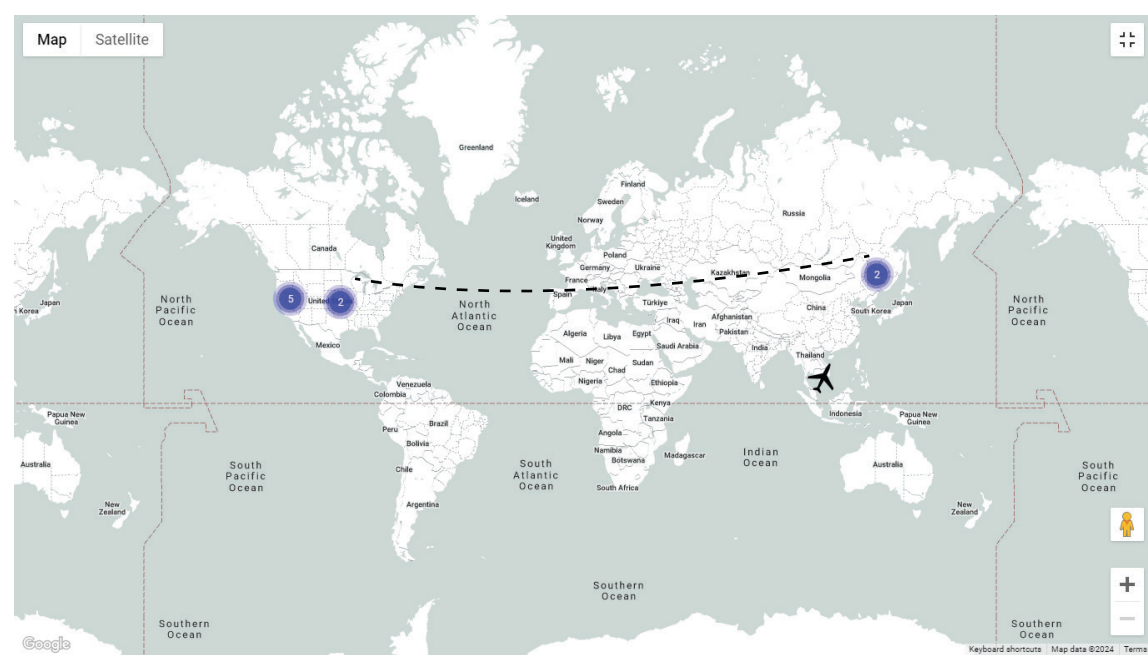
Personalized
Support

Command Center Dashboard

Our easy-to-use customer platform now gives you real-time visibility into all your shipments, in one centralized location.



Route Details



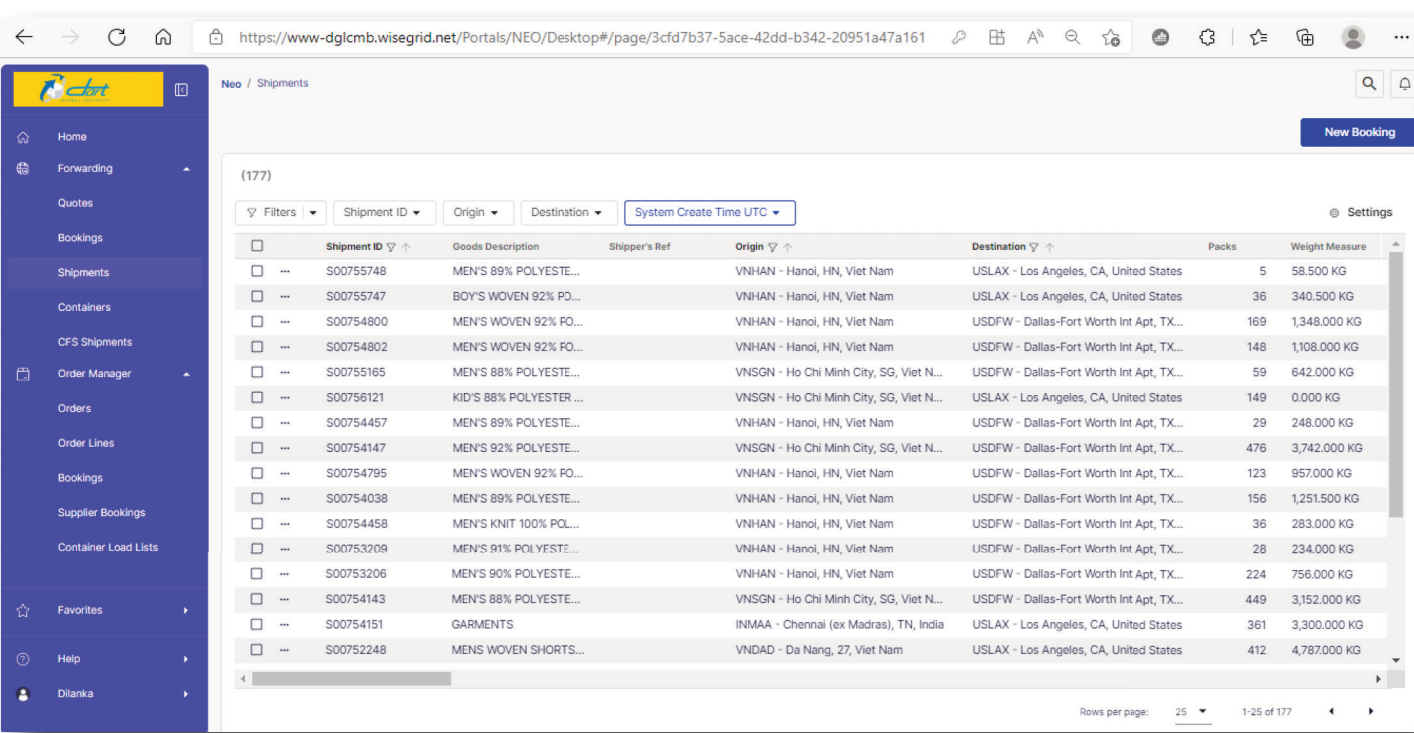
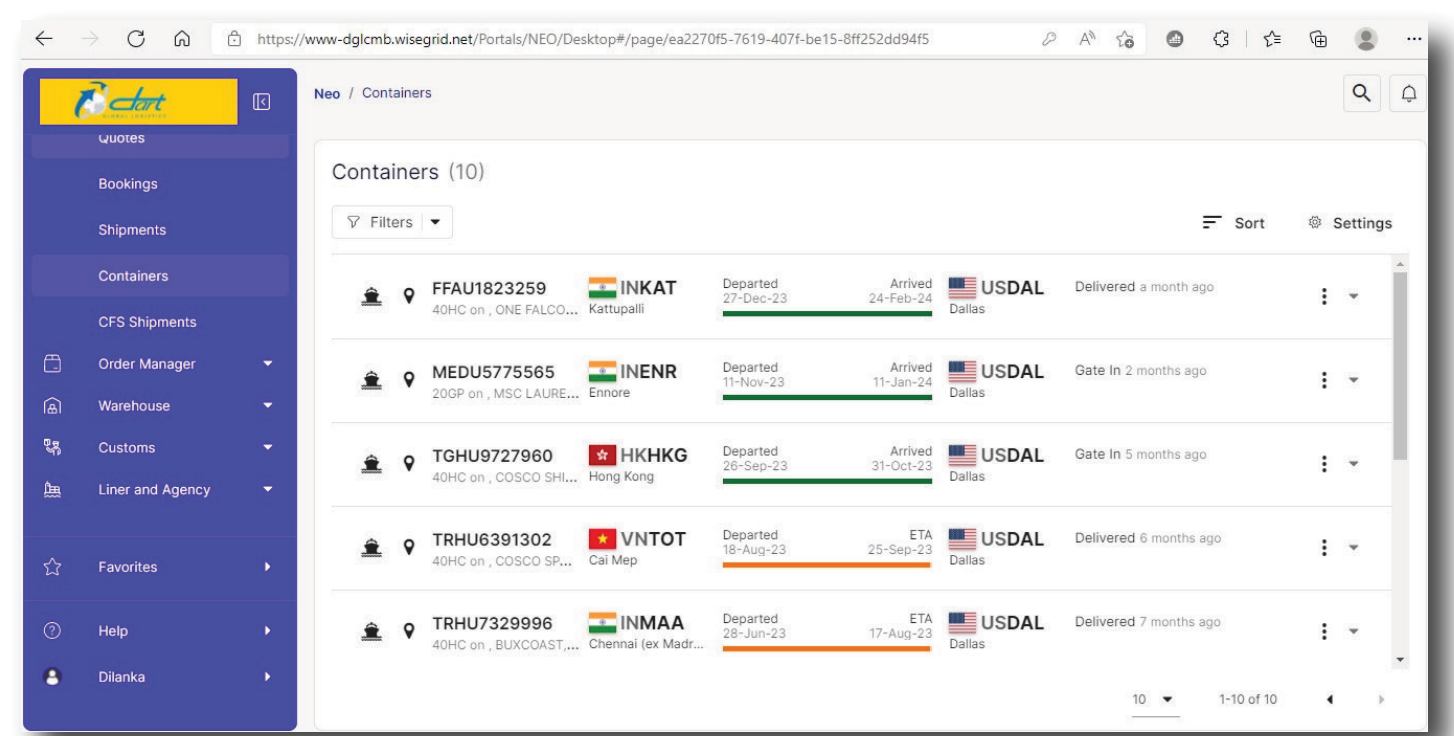
Route Visualizer

Our route visualizer provides a comprehensive map of cargo movements, including color-based alerts for departure and arrival delays, enabling efficient management of supply chain activities.

Live Container Tracking

Get timely, up-to-date ETAs to the next port of call, directly from the ship's captain, while the ship is traveling across the ocean between ports.

You will have all the information you need in one place.

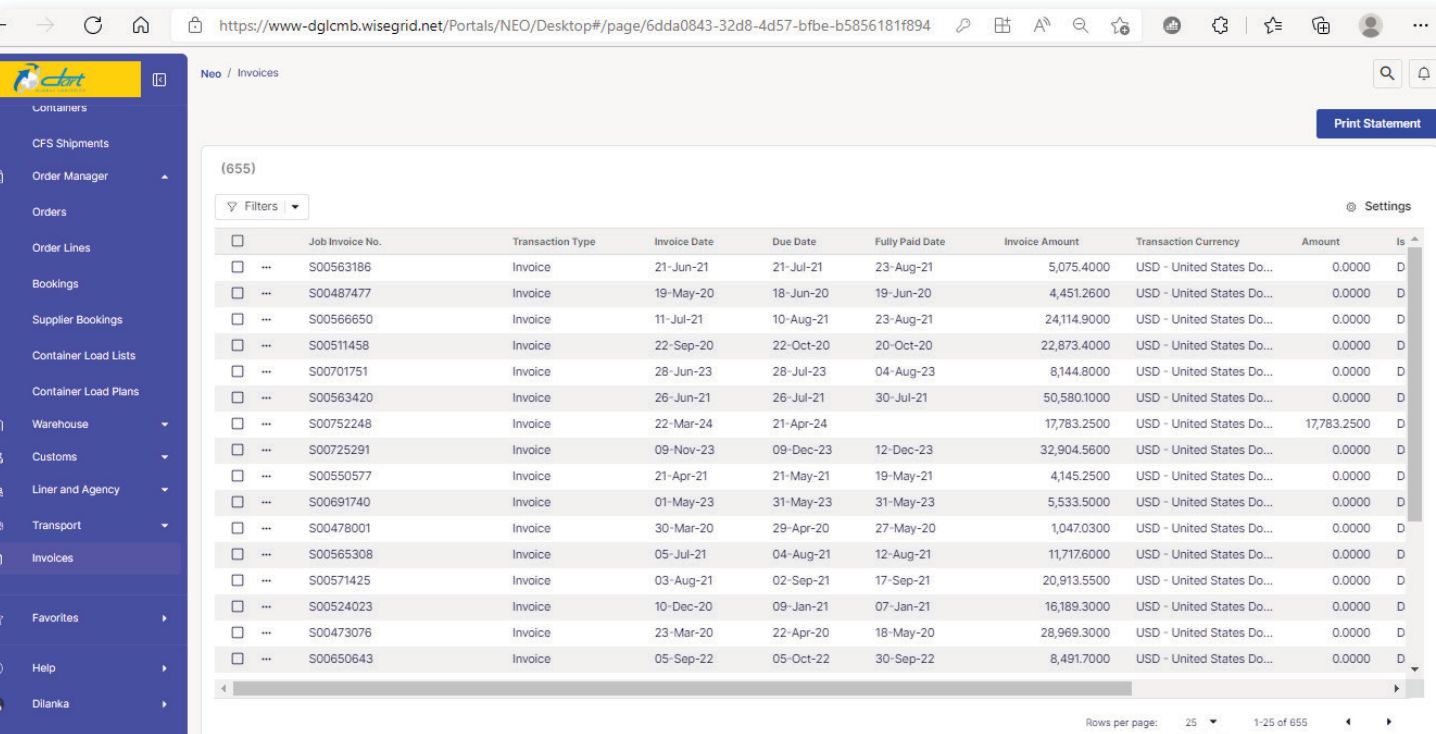
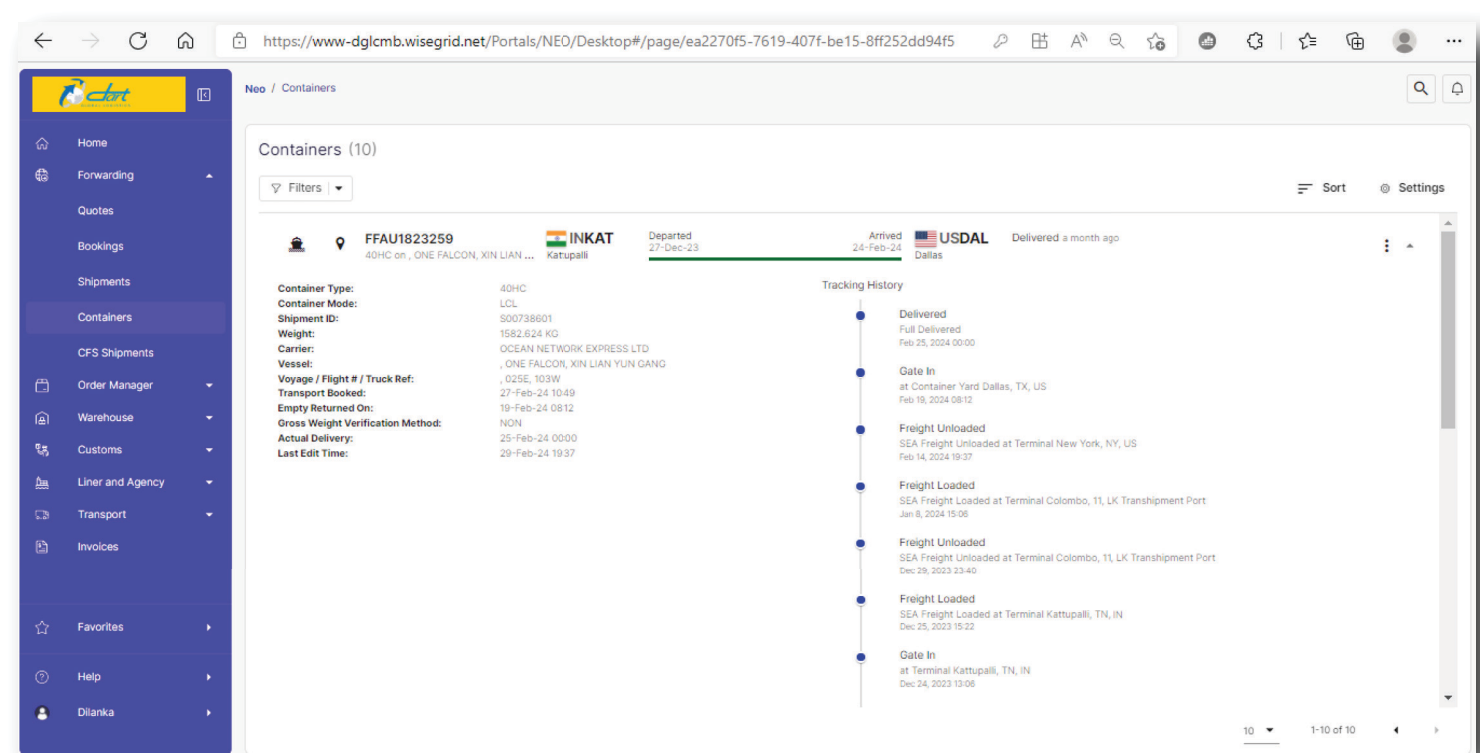


Track Your Shipments

You can monitor your end-to-end shipments with a map-based visualization of their cargo as it progresses across the supply chain, providing a unified view of their air and ocean data for greater shipment transparency and decision-making.

Access to Performance Reports

Performance reports simplify ocean shipments data analysis, enabling critical decision-making and monitoring across carriers and ports, identifying patterns, and modeling future impacts for smooth supply chains.



Invoice Management

All your invoices are in one place. Preview and download. See a breakdown of charges. And quickly find invoices by due date and payment status.

Instantly Know of Status

Never be caught off-guard, and keep everyone informed with the latest information.

Fast, Smooth Customers Clearance

View documents, status updates, and more to get your goods across the finish line to their destination.

If you need any further assistance, please drop us an request today.
We shall revert back immediately.

REQUEST